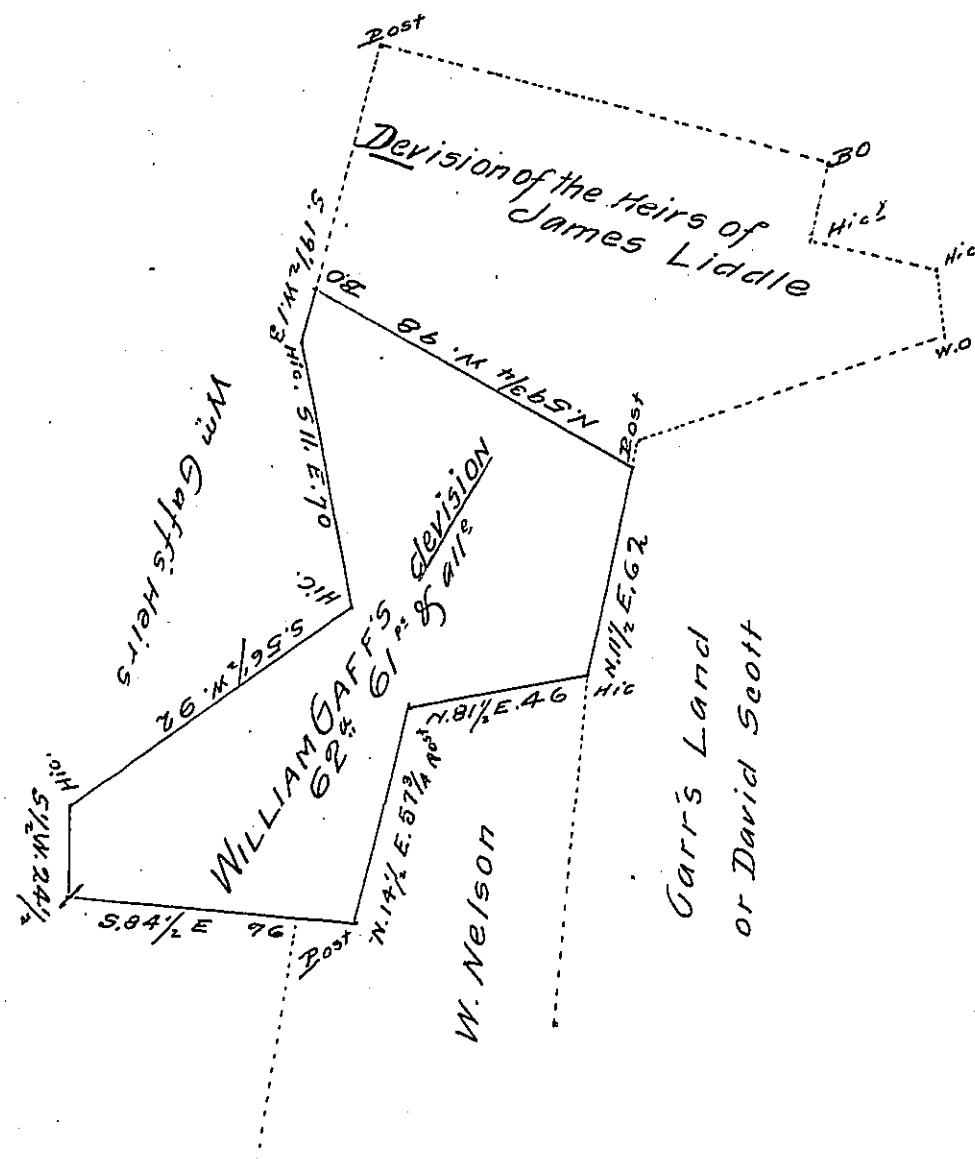


FORM NO. 1.



The above is a Draft of a Tract of Land situated in Air Township Bedford County containing 62 acres & 61 perches with the allowance of six pt Cent for roads being part of a Tract of land originally surveyed for James Liddle on order of survey dated June 17<sup>th</sup> 1767 N<sup>o</sup> 3878. Containing 119 3/4<sup>a</sup> & allow<sup>e</sup>. Devided August 16<sup>th</sup> 1797 agreeably to a conveyance from James Liddle to William Gaff dated October 10<sup>th</sup> 1770

George Woods D.S.

To Daniel Brodhead Esq. S.G.

IN TESTIMONY that the above is a copy of the original remaining on file in the Department of Internal Affairs of Pennsylvania, made comformably to an Act of Assembly approved the 16th day of February 1833, I have hereunto set my hand and caused the Seal of said Department to be affixed at Harrisburg, this twenty-sixth day of June 1907

*Henry Houch*  
Secretary of Internal Affairs.